

Phone Installation

* This Battery Case is extremely easy to install and use, simply take off the top cover of the battery case and slide your phone into the case.



Notes for installation and disassembly

Remember not to break the phone, so as not to damage the interface



Correct way to remove: tilt less than 15% to align the socket to insert or remove the earphone



Do not open too much when disassembling the mobile phone, otherwise the interface will break



The designed buffer allow the phone been installed with other protection layer

Charge the Power

A. Can charge the battery via both available exist Micro USB and USB Type C ports with cable connect to the outlet.

B. The blue LED will keep flash while charging, once complete the charge the full 4 blue LED will keep light on still then.



Blue LED Indication (Power on & Power Level indication)

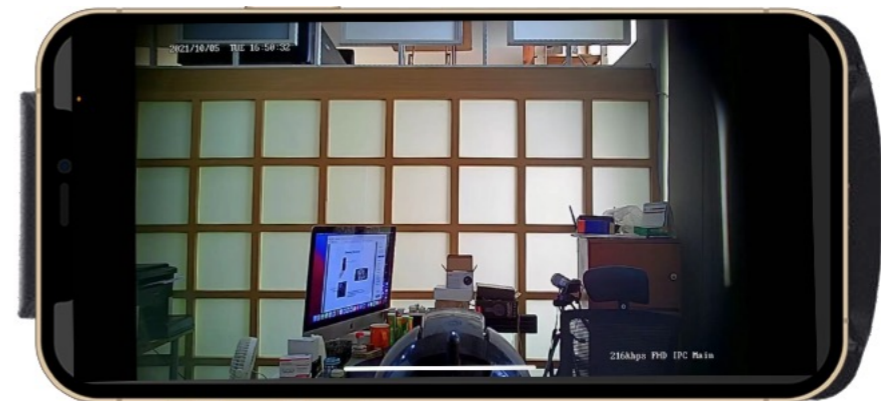
Power On and Off

A. Power on the device by pushing the power button once, while pushing twice to power off

B. The Blue LED indication light on/off according to the power on/off. The number of the LED been light on show the left power capacity level of the device.



Shooting Direction



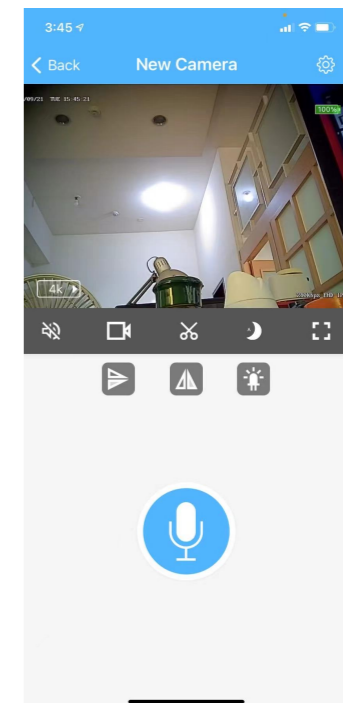
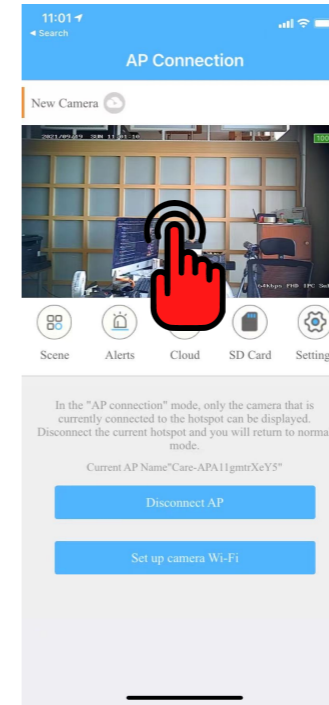
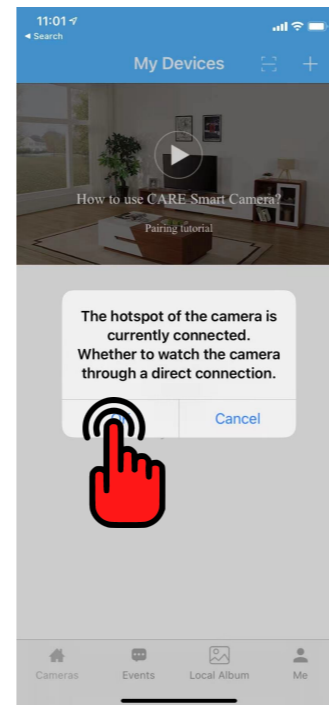
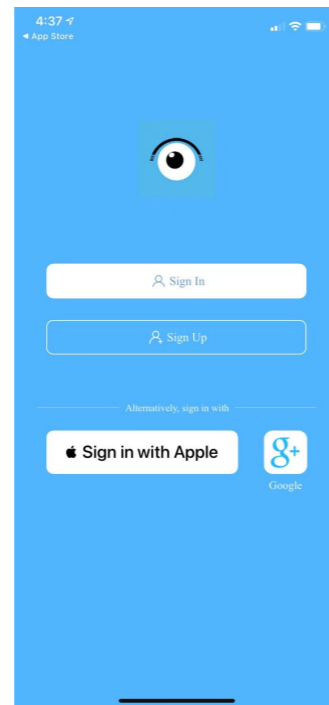
While put the phone on table need to face down the phone screen to shoot for having the proper shooting angle

Install the App and connect the wifi

Find and download the app name “HDlivecam” in iOS App store or Google Play to install. Or scan the QR code link below to download and install



Find the Care-Apxxxxxxxxxxx in your WIFI signal list to connect then open the app to preview, control and setup the camera, then run the app and sign up with your Apple ID or Google Account.



Dual Recording in Safety

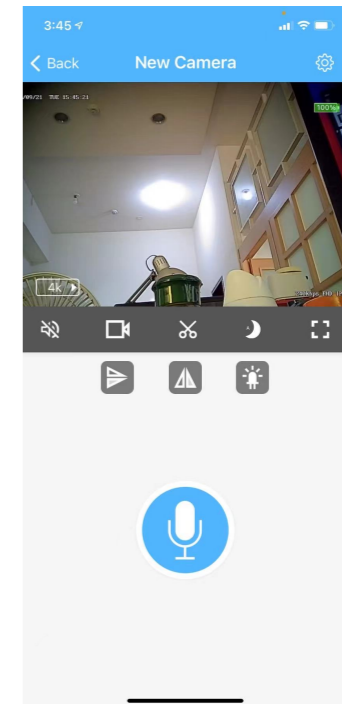
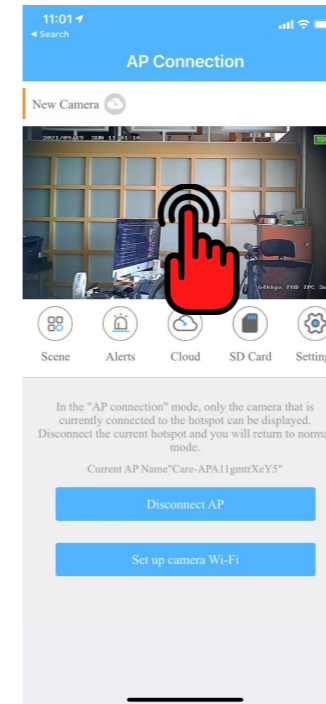
A. Saved in the SD card (Into the Device)

As long as power on the device and preview the camera view from the app it will start to record all the way automatically until the device been powered off

Remark: Make sure to check the memory card and battery Power Capacity status

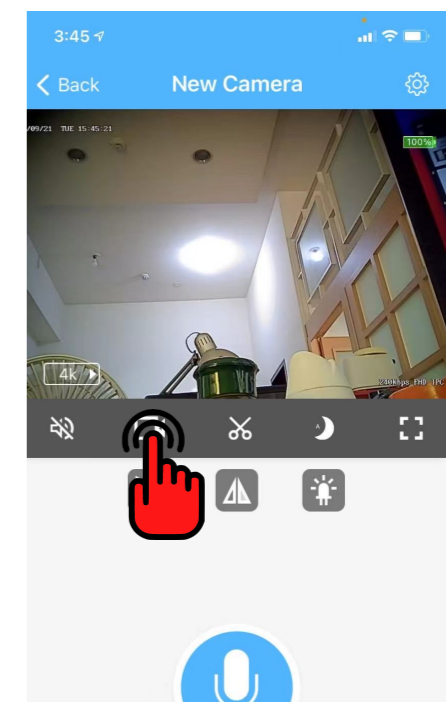
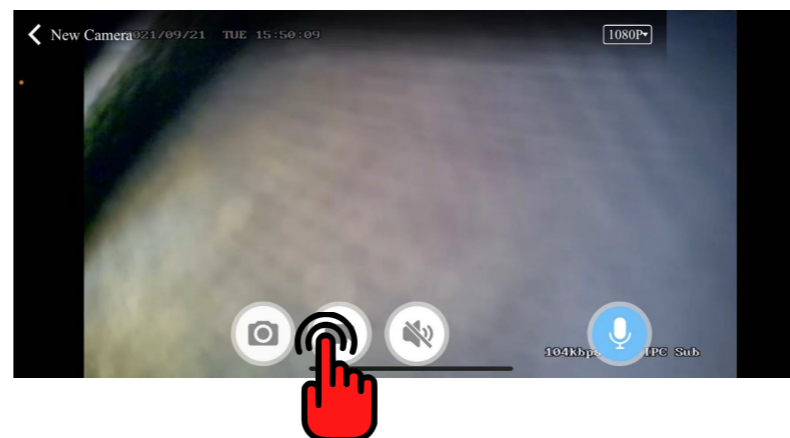
If the motion record function been enabled

This part will automatically go to the motion record Mode all the time



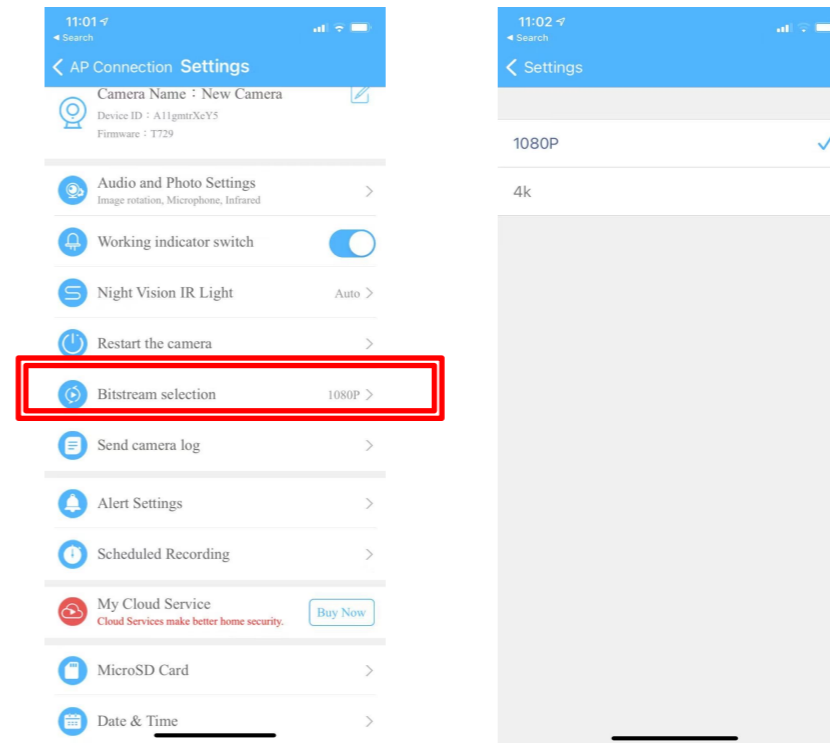
B. Saved in the memory (Into the Phone)

Manually push the recording button to record the event scenario you want on the preview menu on half or full screen

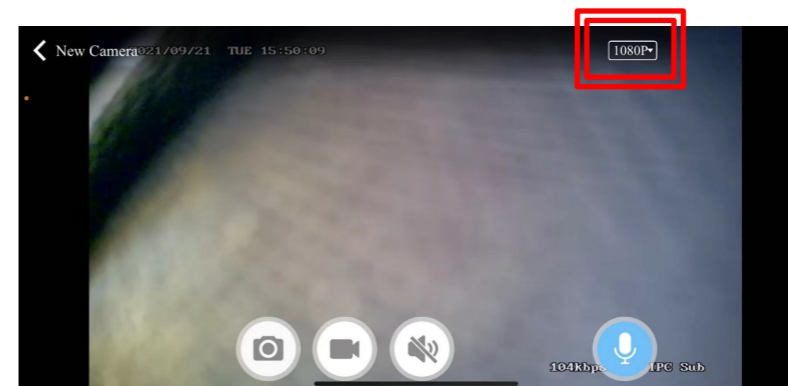


Recording Resolution Setup

A. Resolution setting for the file saved in device's memory



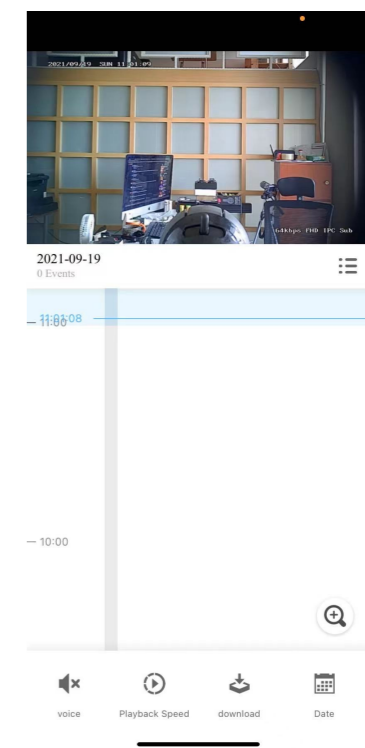
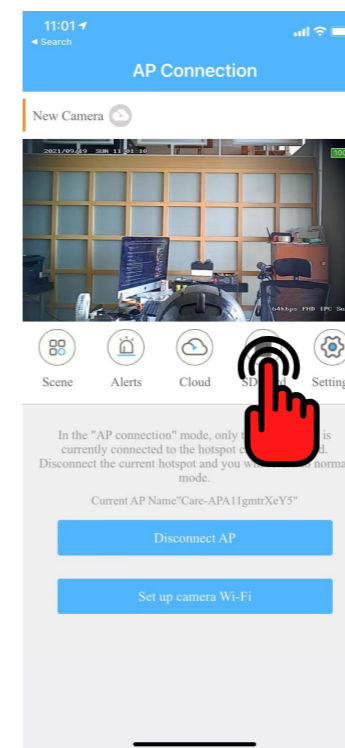
B. Resolution setting for the file saved in phone's memory



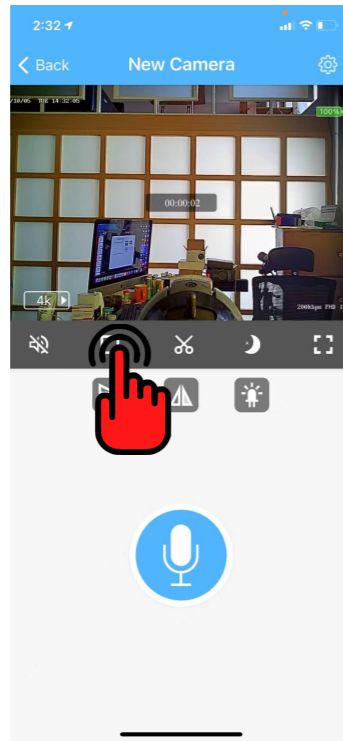
Remark: 4K is 1080p, 1080p is VGA

Play back the automatically saved video file in the devices

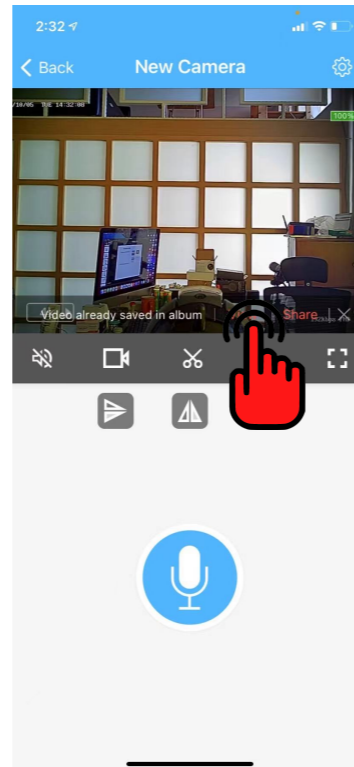
- A. Play back the files saved in device's memory
 - It could fast browse the saved video or search by time/date line to watch from the app preview, before downloading them
 - Then select the event occurred period video to download to your phone memory
 - All video will be saved as files, each interval as 5 minutes as default



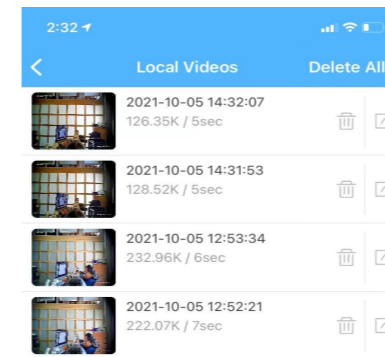
Play back the manually saved video file in the phone



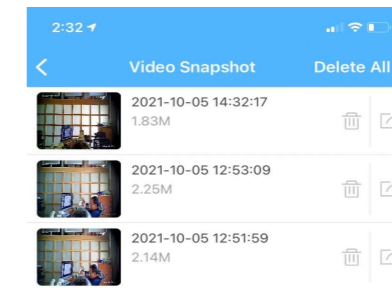
Push the record key to start record and push the same key again to stop record



While will come out The view/share commend overlay below the screen



Once pushing the view commend it will call out the local saved video files folder page



You may play and manage the files as you like

Remark: A. Only the way can call out the local saved file folder as more safety cause
B. The local saved file folder is also the downloaded files from the device will be saved to

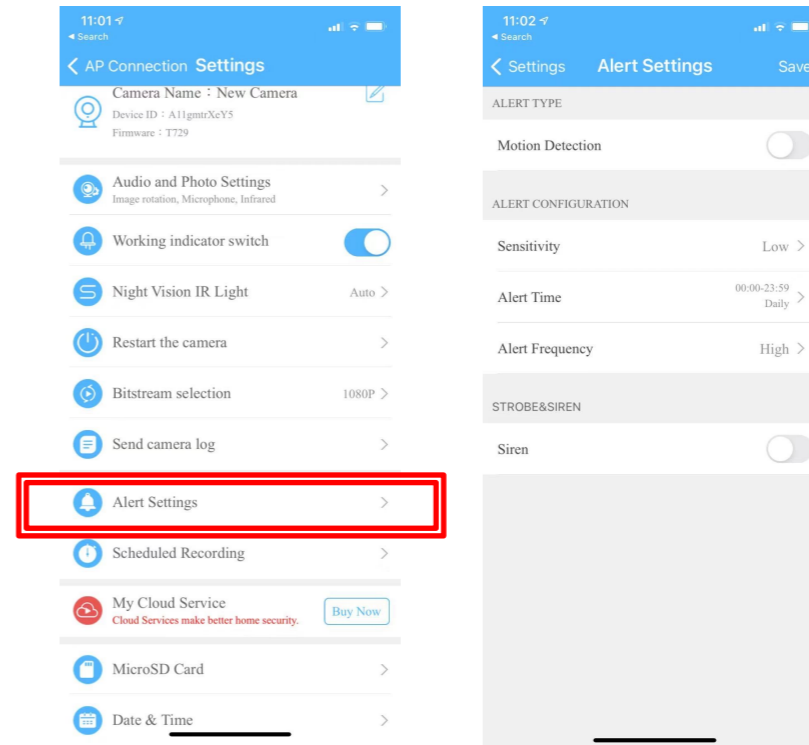
Motion Detection Enable Setup

A. Enable the Motion Detection setup to save

Adjustment of the parameters

- Sensitivity
- Alert Time
- Alert Frequency
- Siren

*Once open motion detection function will enable the loop recording automatically



Schedule Recording Function Enable Setup

A. Set the timer in the setup menu

- Adjust the timer to start and stop to record
- It could set various timers to record

