

# H.264-1080P Remote Wireless Camera

## Operating Instructions

Thank you for having chosen this product. This camera adopts a unique ultra-portable design, which enables it to be applied in various fields and brings you convenient, safe and colorful daily life. Please follow the steps in the instructions to set up your camera correctly.

1. Press the ON/OFF key to turn on the camera. Press the ON/OFF key for 3 seconds to turn it off.

(When the camera is on, you may press Reset for 5 seconds to restart the camera for factory settings)

### I. Mode represented by key indicator

Red light is power indicator, which is always on when the power is on.

Blue light is WIFI indicator.

Specific mode is as follows:

1. Point-to-point mode: Blue light flashes slowly
2. Configuration of remote camera completed: Blue light is always on

**If you are not clear what mode it is, reset the camera and switch to point-to-point mode.**

**Note: This reset works only when the blue light is always on or flashes slowly. Press the Reset key for about 5 seconds until the indicators all go out, and let go until the camera starts (about 30 seconds).**

### II. Download APP software



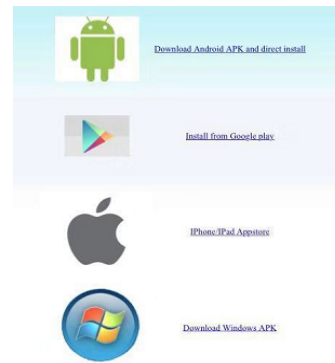
Contact Us:  
Tel. +385 51 673 400  
Fax. +385 51 671 542

Mail:  
info@spyshopeurope.com  
sales@spyshopeurope.com

Beling d.o.o.  
Franje Čandeka 23B  
51000 Rijeka, Croatia  
VAT No. HR 80249393012



(Figure 1)



(Figure 2)

Method 1. Scan the QR code (Figure 1), and enter the download page (Figure 2). Choose to download the software according to the system of the mobile phone. Download and install the computer client through the download address

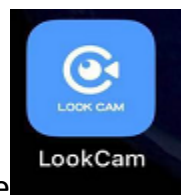
[http://lookcam.ffvv.xyz:8800/lookcam\\_download.html](http://lookcam.ffvv.xyz:8800/lookcam_download.html)

Method 2. For Android, search for APP software called LOOKCAM on Google Play, and download and install it.

For Apple, search for APP software called LOOKCAM in App Store, and download and install it.

Note: If you scan with WeChat, when (Figure 2) appears, click the browser in sharing in the upper right corner to open and download the software.

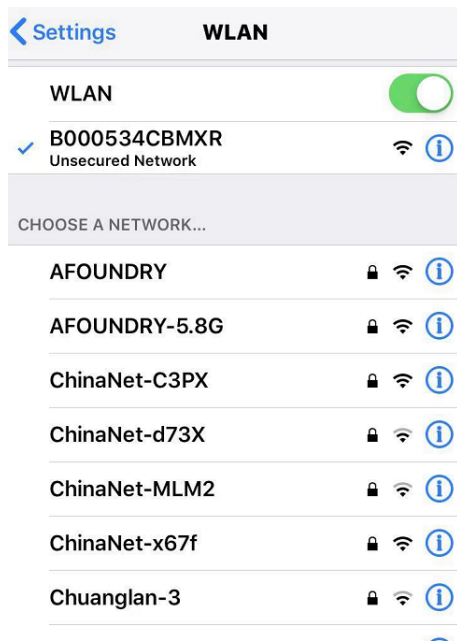
After downloading and installing, the following icon appears on the



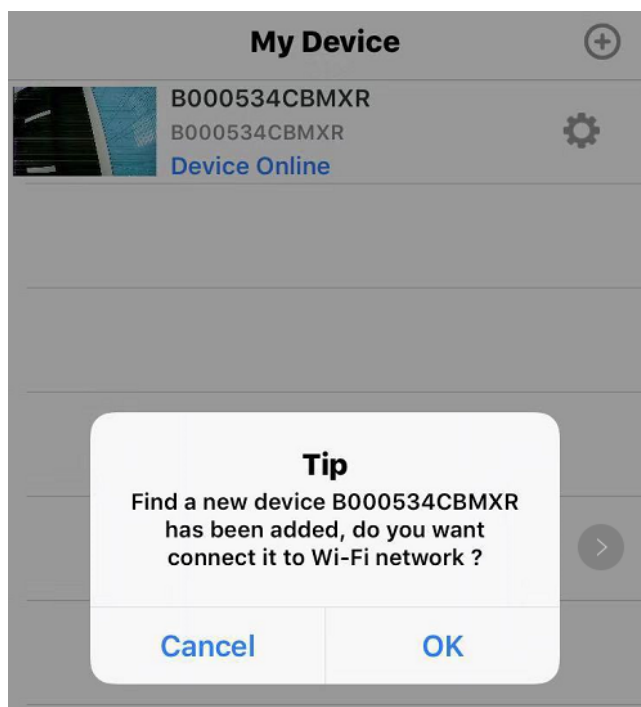
mobile phone

III. Point-to-point connection of mobile phone to camera

Enter the mobile phone WI-FI settings, find the WiFi account (UID number) and connect. As shown in the figure



After the UID of the device is connected, open the phone APP (LOOKCAM). (As shown below)



Click Cancel point-to-point short-range viewing (point-to-point is connected and viewing allowed) and click Yes to fast pair router and enter remote viewing (If you need to set up remote, please continue to read the instructions and follow the steps)

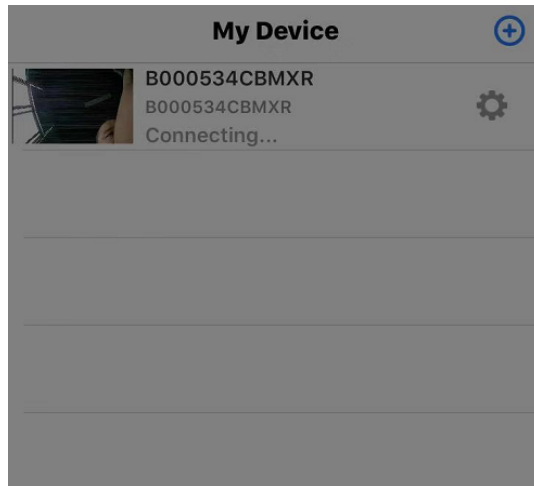
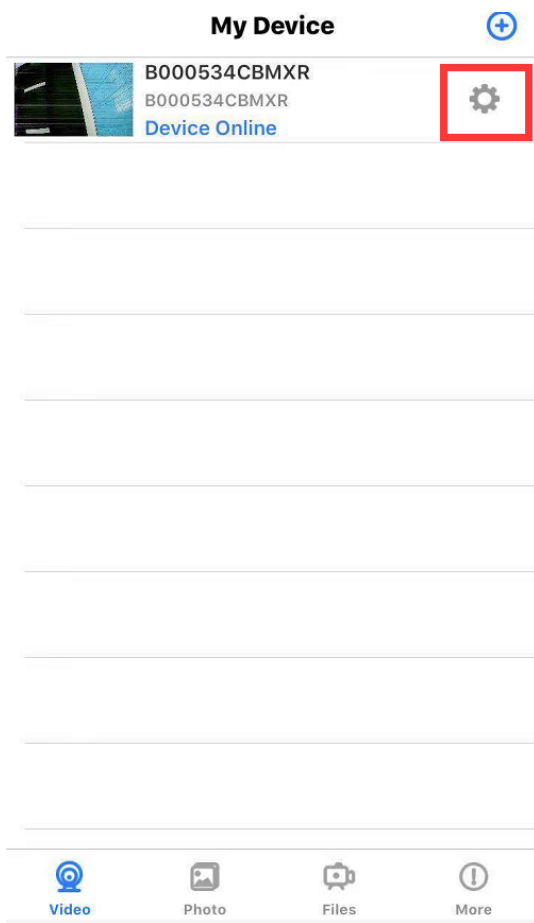


#### IV. Set up the camera remote

**When point-to-point video can be viewed, return to the previous level and enter the interface as shown in the figure.**

Click the setup icon → Advanced Configuration → WiFi Connection Configuration → Find WiFi → Enter Password → Click OK and the camera will restart automatically. (Wait for the camera to restart (about 40 seconds). The camera will change from offline to online, at which time the

viewable video can be accessed remotely.)



B000534CBMXR

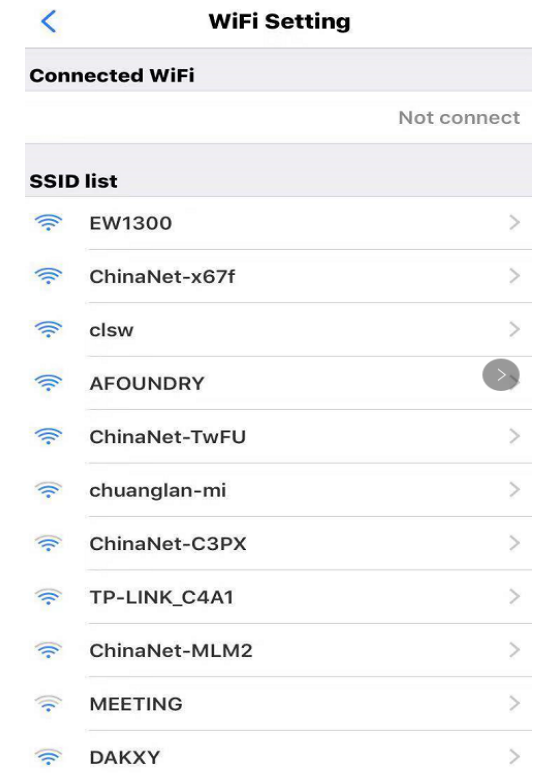
Edit Device

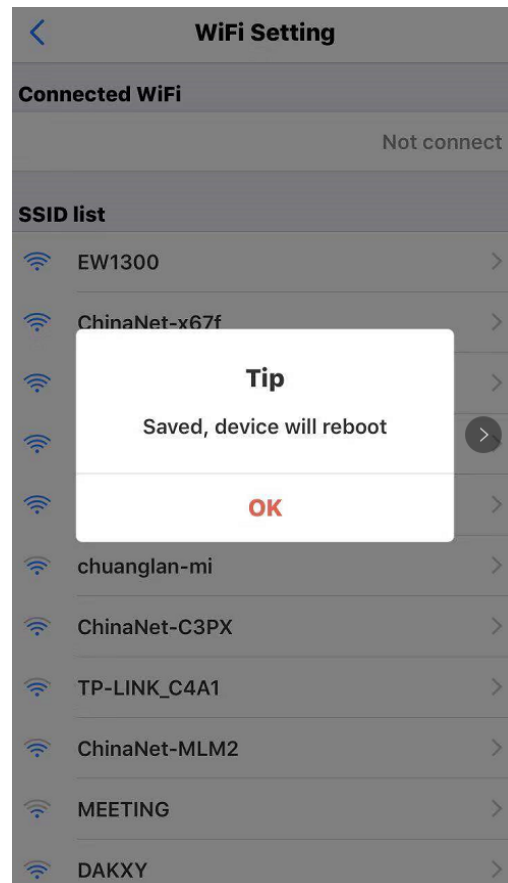
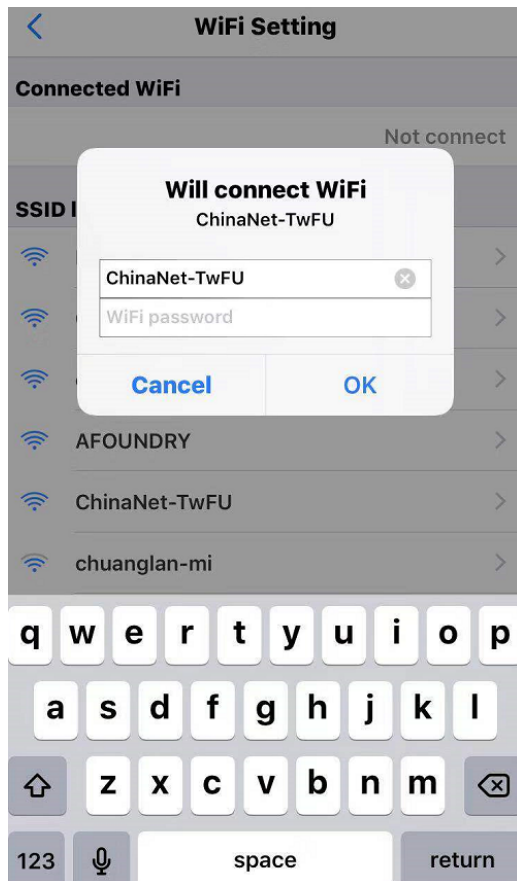
Delete Device

Reconnect Device

Config Wi-Fi

Cancel





**Note: When connecting to remote, make sure you enter the correct WIFI password. Otherwise, the camera will restart automatically after clicking OK. However, due to the wrong password, the camera will not be online, and then you need to reset it and re-pair.**

Resolution Ratio	1080P/720P/640P/320P
Video Format	AVI
Frame Number	25
Visual Angle	150 /90 degree
Motion Detection Camera Shooting	Straight line 6 meters
Minimal Illumination	1LUX
Video Duration	Over 1 Hours
Compressed Format	H.264
Recording Range	5m <sup>2</sup>



Consumption	380MA/3.7V
Storage Temperature	-20-80 degree centigrade
Operating Temperature	-10-60 degree centigrade
Operation Humidity	15-85%RH
Memory Card Type	TF card
Player Software	VLCPlayer/SMPlayer
Computer Operating System	Windows/Mac OS X
Mobile Phone Operating System	Android/iOS
Web browser	IE7 and above,chrome,firefox safari.etc
Largest customer	4

## **V. Specifications and parameters**

Reminder: What Micro SD Card is required for recording? Why can't I use my Micro SD Card for recording? The camera supports up to 128 GB Micro SD card. Please use High Speed Class 10 FAT formatted memory card. You must format the Micro SD before using. If SD card is not recognized when inserted into camera, just remove and re-insert.

Why can't the camera go online?

1. Powerless.
2. Check if your router is working properly or not.
3. Weak Wi-Fi signal.
4. Wrong password wrong while Wi-Fi setting

Why is remote monitoring not smooth? You should choose

a suitable resolution to watch according to your internet speed.

Why I can't save to my SD card? SD Card must be formatted if this is your first time to use it.

How do I when I forgot my password? Press reset key for 10 seconds and restore the factory setting.

5. The initial password for each camera is 123456. Please change the password to ensure the security of your camera.

6. If the camera cannot be connected to the router, please reset, and connect the hot spots before completing the configuration.