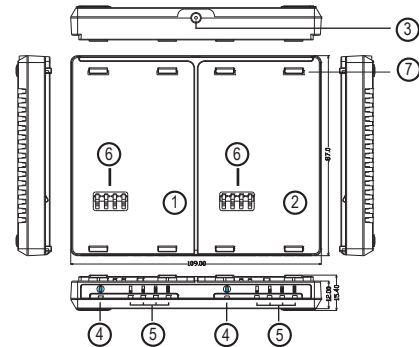


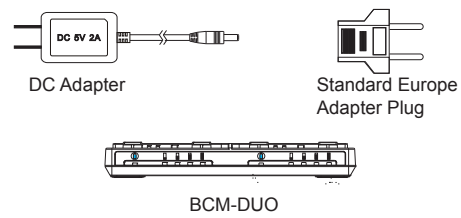
80x120mm

1. Name and Parts



- | | |
|---------------------------|------------------------|
| 1. Charging Station One | 5. Charging Status LED |
| 2. Charging Station Two | 6. Metal Contact Strap |
| 3. Adapter Plug-in Socket | 7. Battery Lock Hook |
| 4. Power Status LED | |

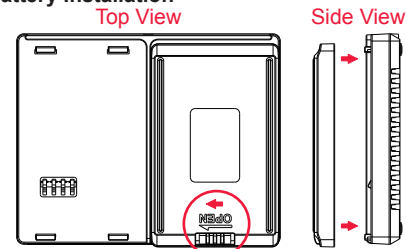
2. Package Content



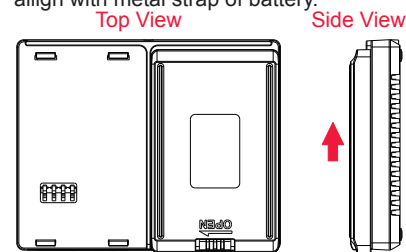
BCM-DUO

(1)

3. Battery Installation



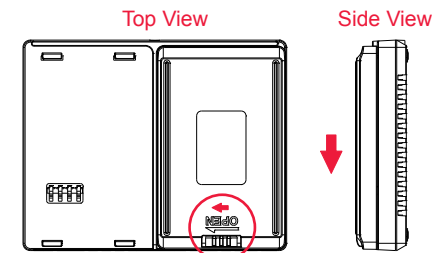
1. Push battery's OPEN Slide Lock to Open position to avoid charging failure.
2. Place battery onto the charging station.
3. Note the alignment: OPEN Slide Lock align with battery LED light. Metal strap of charging station align with metal strap of battery.



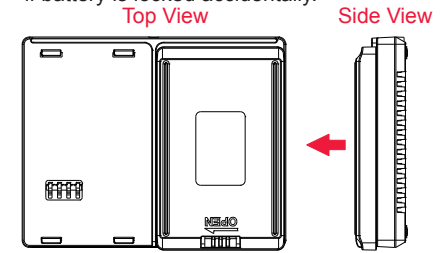
4. Push in red arrow pointed direction to secure battery in place on the charging dock.

(2)

4. Battery Release



1. Push the battery in red arrow pointed direction to release battery from the charging dock. Push battery's OPEN Slide Lock to red arrow pointed direction to unlock battery if battery is locked accidentally.

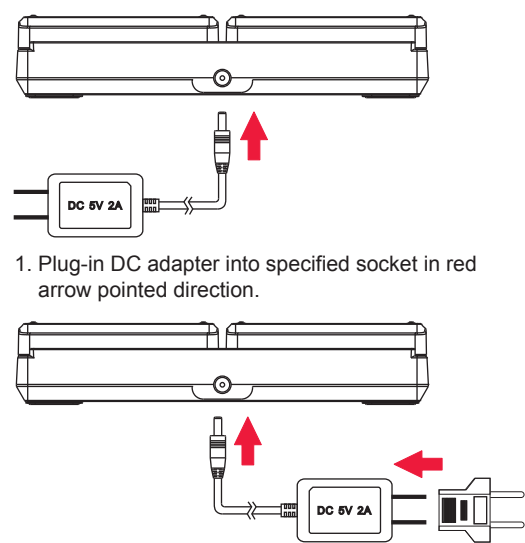


2. Remove the battery from the charging dock in red arrow pointed direction.

(3)

80x120mm

5. Power Adapter Plug-in

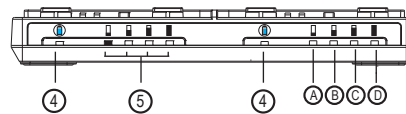


1. Plug-in DC adapter into specified socket in red arrow pointed direction.

2. For most European countries, plug-in the standard Europe adapter plug in red arrow pointed direction onto DC adapter. Plug-in DC adapter into specified socket in red arrow pointed direction.

(4)

7. Battery Charging



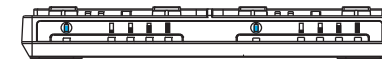
1. LED 4 indicates battery is secured and charging is started. LED 4 signal lights up in red color when the battery is secured.
2. LED 5 shows battery status. LED 5 flashes in green color from A to D continuously repeating. LED 5 signal diverted into four signals:
A. Battery remain 25% power.
B. Battery remain 50% power.
C. Battery remain 75% power.
D. Battery remain 100% power.
3. LED A, B, C, D gradually flashes from A to D in respective mannar continuously and repetitively to show charging / remaining power status.
4. Follow the steps described in Battery Release section to remove battery from charging dock.

NOTE: Compatible Battery Series:
BA-4400 and BA-2200

NOTE: Push OPEN Slide Lock to Open position to avoid damaging battery lock hook located at top and bottom of both charging position.

(5)

BCM-DUO1 BA-4400 & BA-2200 Battery Charging Dock Quick Guide



Law Enforcement Products Manufacturer

LawMate

V1.0